







Kilkenny College

Careers Evening

October 2007



An Officer of Kilkenny Fire and Rescue Service

- ⌘ Who am I?
- ⌘ What do I do?
- ⌘ What do I bring to my work?
- ⌘ Is my job rewarding?



Kilkenny Fire and Rescue Service

What do we do? (plane 1/2)



Kilkenny Fire and Rescue Service

What do we do? (water)



An Officer of Kilkenny Fire and Rescue Service

- ⌘ What qualities have you got?
- ⌘ Have you patience?
- ⌘ Are you committed?
- ⌘ Can you work independently and in a team?



There is no 'I' in team

Kilkenny Fire and Rescue Service

What do we do? (fire 3/4)



Kilkenny Fire and Rescue Service

What do we do? (RTC 3/5)



An Officer of Kilkenny Fire and Rescue Service

- ⌘ Can you work under pressure?
- ⌘ Can you make decisions?
- ⌘ Are you dynamic?
- ⌘ What attributes can you bring to work every day?



Kilkenny Fire and Rescue Service

What do we do? (chemical 2/2)



Kilkenny Fire and Rescue Service

What do we do? (RTC 1/5)



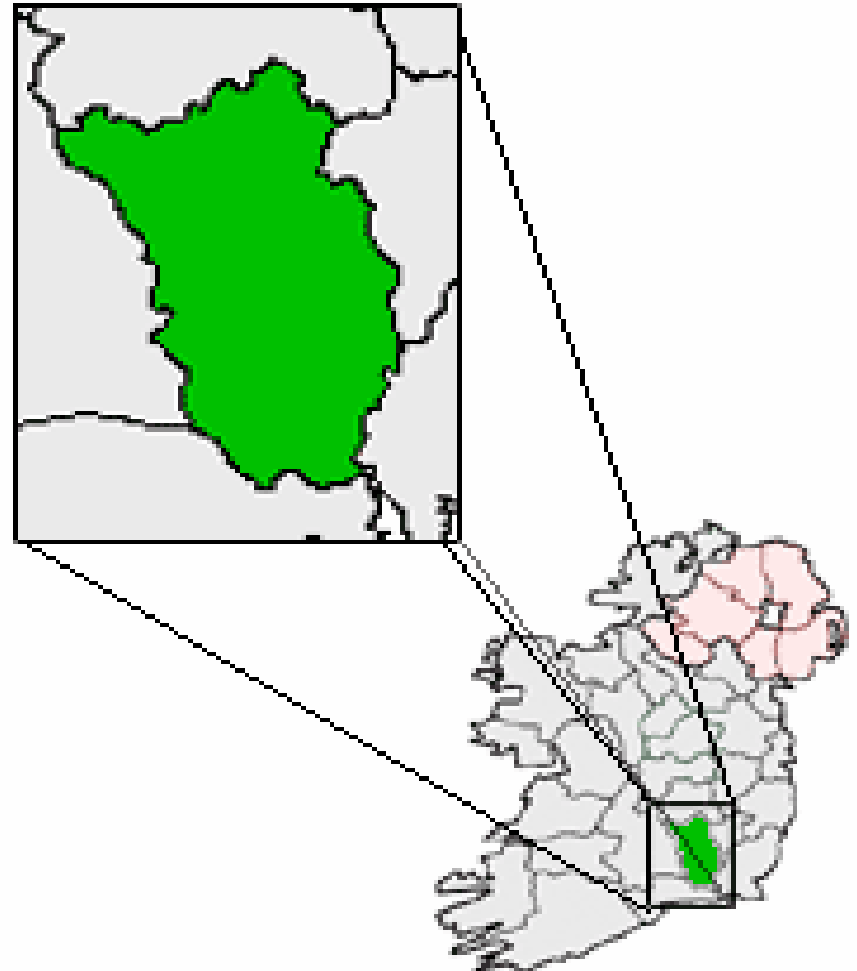
Kilkenny Fire and Rescue Service

What do we do? (chemical 1/2)



Kilkenny Fire and Rescue Service

- ⌘ Seven brigades
- ⌘ 71no firefighter and junior officers
- ⌘ 4no senior fire officer
- ⌘ 2no admin support
- ⌘ 1no fleet mechanic
(26no vehicles)



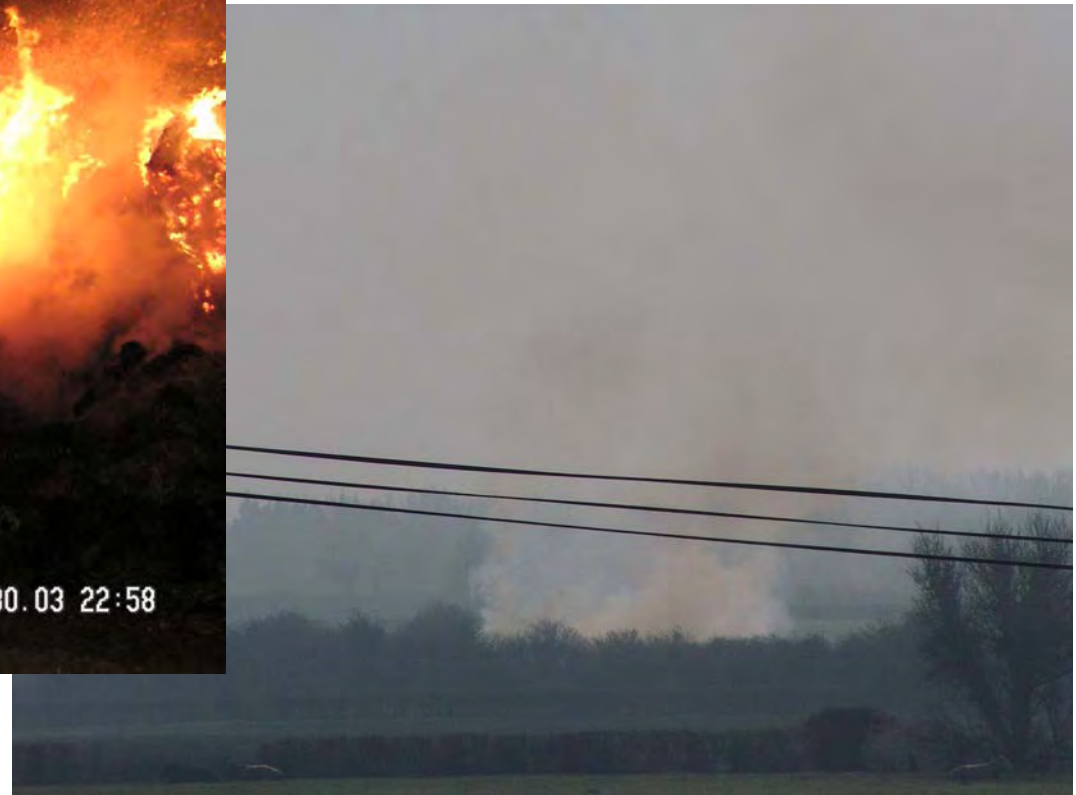
Kilkenny Fire and Rescue Service

What do we do? (plane 2/2)



Kilkenny Fire and Rescue Service

What do we do? (fire 1/4)



Kilkenny Fire and Rescue Service



Area

2,061 km²



Population

88,000 in County

23,000 in City



Fire Service risks

Rail Network, 70 km

Road Network, 4,000 km (No Motorways Yet!)

Belview Port

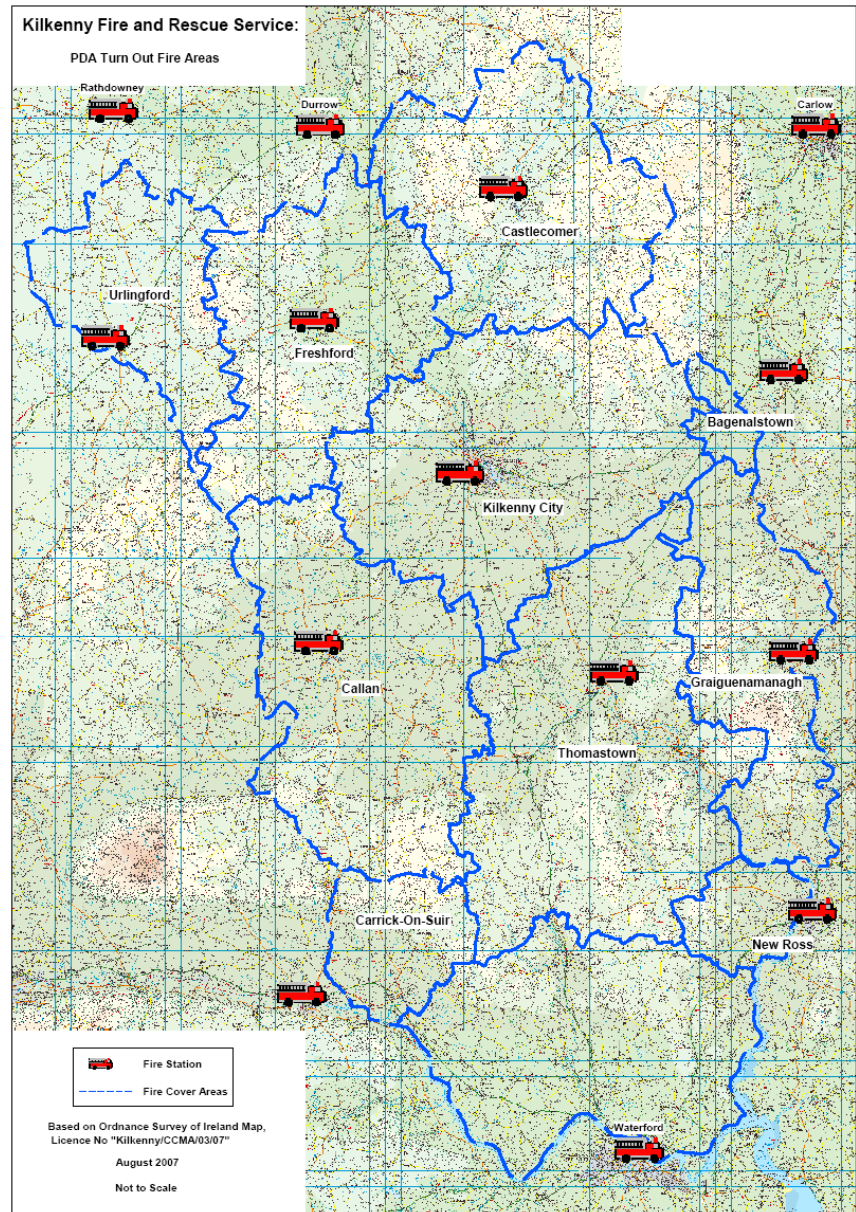
Heavy Industry

Care facilities –

Hospitals (3no.)

nursing homes

Residential



Kilkenny Fire and Rescue Service

What do we do? (fire 4/4)



Kilkenny Fire and Rescue Service

What do we do? (fire 2/4)



Kilkenny Fire and Rescue Service

Statistics

- ⌘ 1,182 emergency calls last year
- ⌘ Average response time 4.5 minutes

(from time of call to vehicle leaving front door of station)

- ⌘ 334 fires
- ⌘ 139 road traffic collisions
- ⌘ 4 water rescues
- ⌘ 2 non-fire rescues
- ⌘ 6 chemical incidents
- ⌘ 1 aircraft incident



Kilkenny Fire and Rescue Service

What do we do? (RTC 2/5)



Kilkenny Fire and Rescue Service

What do we do? (ops)



- ⌘ Fires
- ⌘ Chemical spills / fires
- ⌘ Water rescue
- ⌘ Road Traffic Collisions (RTC)
- ⌘ Rescues
- ⌘ Special Service

Kilkenny Fire and Rescue Service

What do we do? (RTC 5/5)



Kilkenny Fire and Rescue Service

What do we do? (prev)



Fire Prevention / Mitigation

- ⌘ Fire Safety Certificates
 - (Everything except a private house and agricultural building)
- ⌘ Inspection of Residential risk premises
 - ☑ Nursing Homes
 - ☑ Hospitals
- ⌘ Dangerous Substances
 - ☑ Bulk Storage
 - ☑ Petrol Service Stations
- ⌘ Licensed Premises
 - ☑ Pub's
 - ☑ Public places of assembly
 - ☑ During Performance Inspections (nightclubs)
- ⌘ Crèches / Child Care premises
- ⌘ Pre-Fire Planning

Kilkenny Fire and Rescue Service

What do we do? (RTC 4/5)





How to get the emergency services?

⌘ Telephone

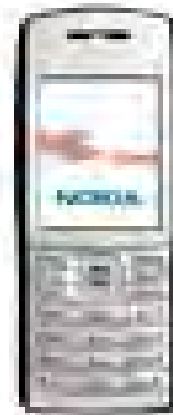
⌘ 112

⌘ Which service?

- ⌘ Where you are?
 - ⌘ What is involved?
 - ⌘ Anyone trapped / missing?

⌘ ICE

- ⌘ In Case of Emergency



Kilkenny Fire and Rescue Service Road Traffic Collisions



Kilkenny Fire and Rescue Service

Road Traffic Collisions



How many impact is there is a car crash?

THREE

1. Vehicle impact itself
2. The occupant within the vehicle hitting the inside of the vehicle and/or one another.
3. The occupants organs within their body.

Kilkenny Fire and Rescue Service Road Traffic Collisions



Kilkenny Fire and Rescue Service Road Traffic Collisions



An Officer of Kilkenny Fire and Rescue Service

- ⌘ What qualities have you got?
- ⌘ Have you patience?
- ⌘ Are you committed?
- ⌘ Can you work independently and in a team?



There is no 'I' in team